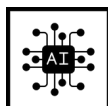
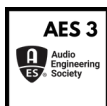
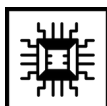




CTSjunior

Digital Power Mixer

CTSjunior is an ultra-compact digital mixer with a four-channel power amplifier delivering 85W per output at 4 Ohms in a Half Rack 1 U housing





CTSjunior

Digital Power Mixer

CTSjunior is a digital mixer with a four-channel power amplifier that allows the integration of CTS and other manufacturers' loudspeakers into fully automatic installations.

Main features

- Connection: CTSnet
- Speaker outputs: 4
- Amplifier power: 4x85W (4 ohms)
- Digital DSP amplifier
- Preamplifier with adjustable gain (0-55dB)
- 24V phantom power switchable for each input
- Microphone processing
- Microphone automation

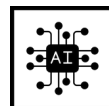
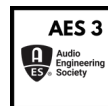
Colors available



Black



Equipped with the following CTS technologies



Technical data

Physical features

Dimensions	1 U / 9,5", width 210 mm × height 44 mm × depth 185 mm
Weight	1.5kg

Electronic features

Amplifier technology	Class D
Amplifier outputs	4
DSP routing (matrix)	6 x 4
Frequency response	20 Hz – 20 kHz
S/N ratio	> 110 dB/A
THD+N	0.08 %, (1 kHz, 8 ohm, 3 dB below clipping)
Dynamic range	> 120 dB
Password protection	yes
Auto Power Save	adjustable from 10 s to 12 h, or never active
Protective circuit	over voltage protection, over current protection, over temperature protection, short-circuit protection, DC protection, power on delay, soft start and inrush current limit
Power supply	90 – 265 V AC 50/60 Hz, universal power supply with Power Factor Correction (PFC)
Power consumption	Maximum (RMS) 300 W, idle state 15 W, Auto Power Save 10 W, Standby 0.5 W
Heat dissipation	max. 21 W, 72 BTU/h, 18 kcal/h
Temperature range	-5 – 40 °C
Cooling	temperature-controlled fan
Output power	4 x 85 W / 4 ohm (1 kHz, THD+N < 1 %), 4 x 45 W / 8 ohm (1 kHz, THD+N < 1 %)
Minimum impedance	2.7 ohm
Input channels	6 (4 channels analog, 2 channels digital via net)

Controllers

Digital signal processors	1
Independent limiters	12
FIR	yes
Input Gain	-60 dB – +15 dB
Routing Gain	-60 dB – +6 dB
Output Gain	-60 dB – +15 dB
EQ	10 x 10 fully parametric filters, Gain +/-15 dB, Frequency 10 Hz – 20 kHz, Q 0.2 – 100
Limiter compressor	8
Noise gate	8
Delay	4 x 0 – 250 ms (0 – 86 m) outputs
X-over	8 x Linkwitz-Riley 4th order (6 dB to 24 dB / octave), high pass 10 Hz – 20 kHz, low pass 10 Hz – 20 kHz
User presets	10
Speaker presets	1000
System latency	1.4ms
Filter technology	80-bit double precision
Input	analog – line/microphone, digital – AES/EBU 32 kHz – 192 kHz, 16/24 bit
Input DSP processing	yes
DeEsser	4
Feedback Eliminator	4
Generator	noise and sinus
DI Function	4 (Digital Intelligence)

Input interface analog

Inputs	4 x analog input (1 x Phoenix 12-pin)
Outputs	4 x speaker output (1 x Phoenix 8-pin)
Input sensitivity	+18 dBu (0 dB Preamp)
Phantom power	switchable per channel (+24 DC)
Preamp	0 – 55dB adjustable in 1 dB steps

Display

Front	Graphic Oled 64x256 pixels
Back	Receive / Send LED (remote control, RS-485 based control network), Phantom red LED

Remote control and remote monitoring

Remote control	RS-485 based control network, control software
Remote monitoring	temperature, protect, AES/EBU signals, power supply, RS-485 based control network, control software
Switching encoder	load preset, standby on/off, parameter control

Connections and controls

Mains connection	IEC C14 connector
------------------	-------------------

Document reference: CTSjunior catalog card (EN) version 1.0

Distribution date: January 9, 2024

© 2024 CTS-Audio Ltd. All rights reserved.

No part of this publication may be reproduced or transmitted in any form or by any means without the express written consent of the publisher.